

Appendix – A

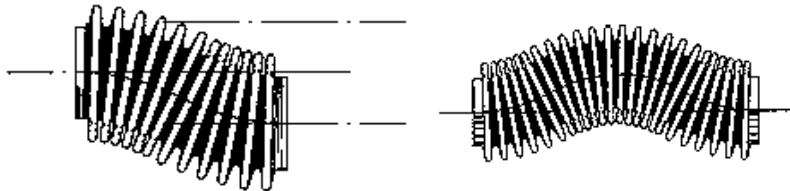
FLEX CONNECTOR INSPECTION AND ALIGNMENT PROCEDURE

Alignment Specifications

⚠ WARNING: The exhaust flex connector is extremely sensitive to installation. A slight misalignment will result in premature failure. Careful inspection of the alignment is necessary.

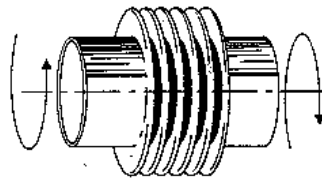
🔧 NOTE: Drawings and pictures shown may not exactly look like the actual parts on the bus. The illustrations are shown for visibility purposes.

MODES OF MISALIGNMENT



Lateral

Squirm



Torsional

Any combination of these conditions can lead to a dramatic reduction in component lifetime.



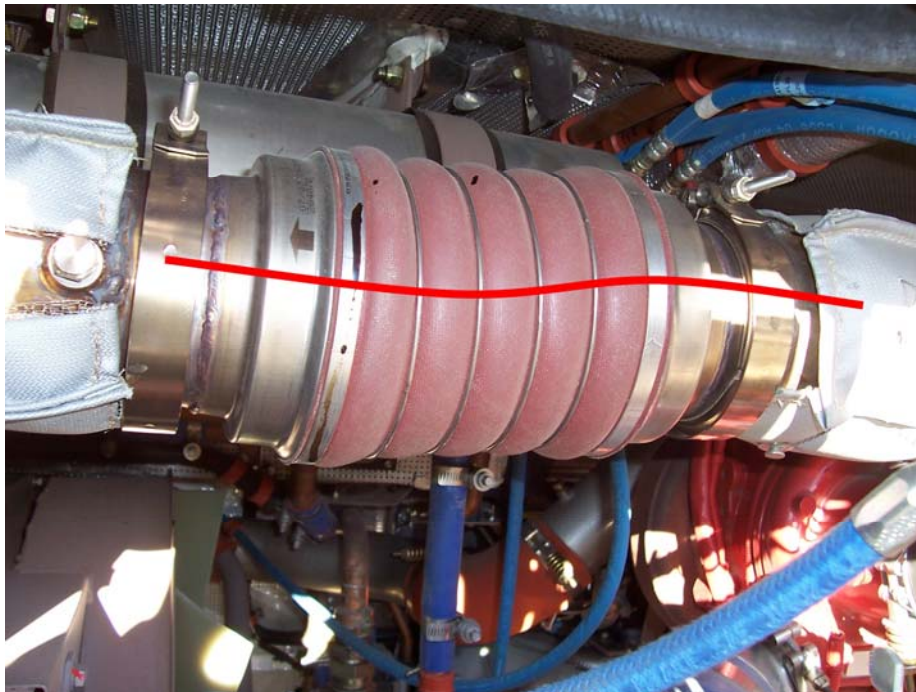
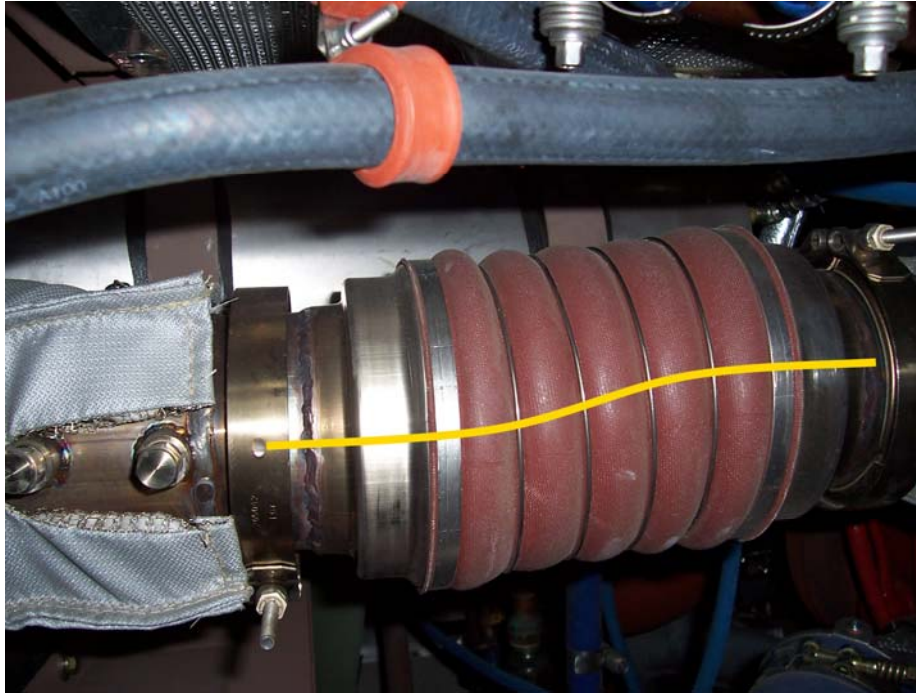
COMPRESSED

FREE (OK)

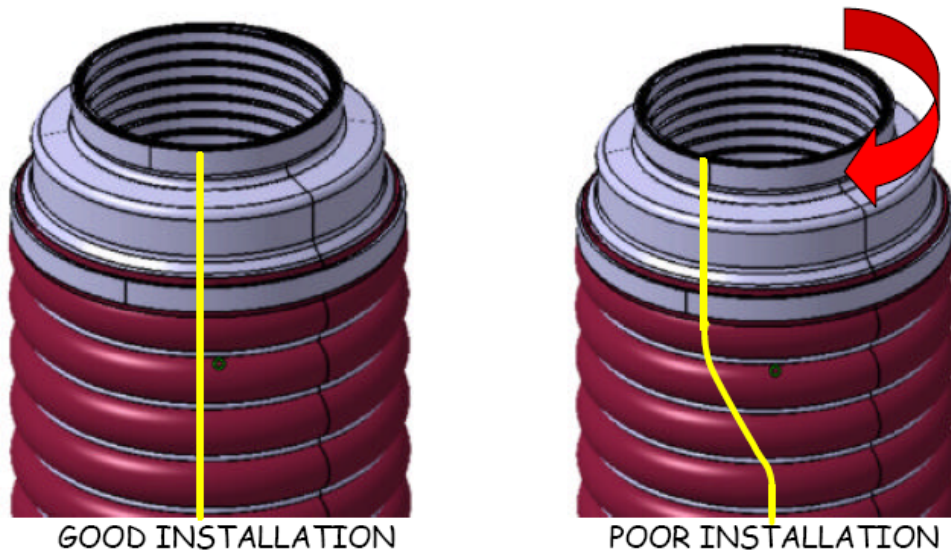
EXTENDED

Axial

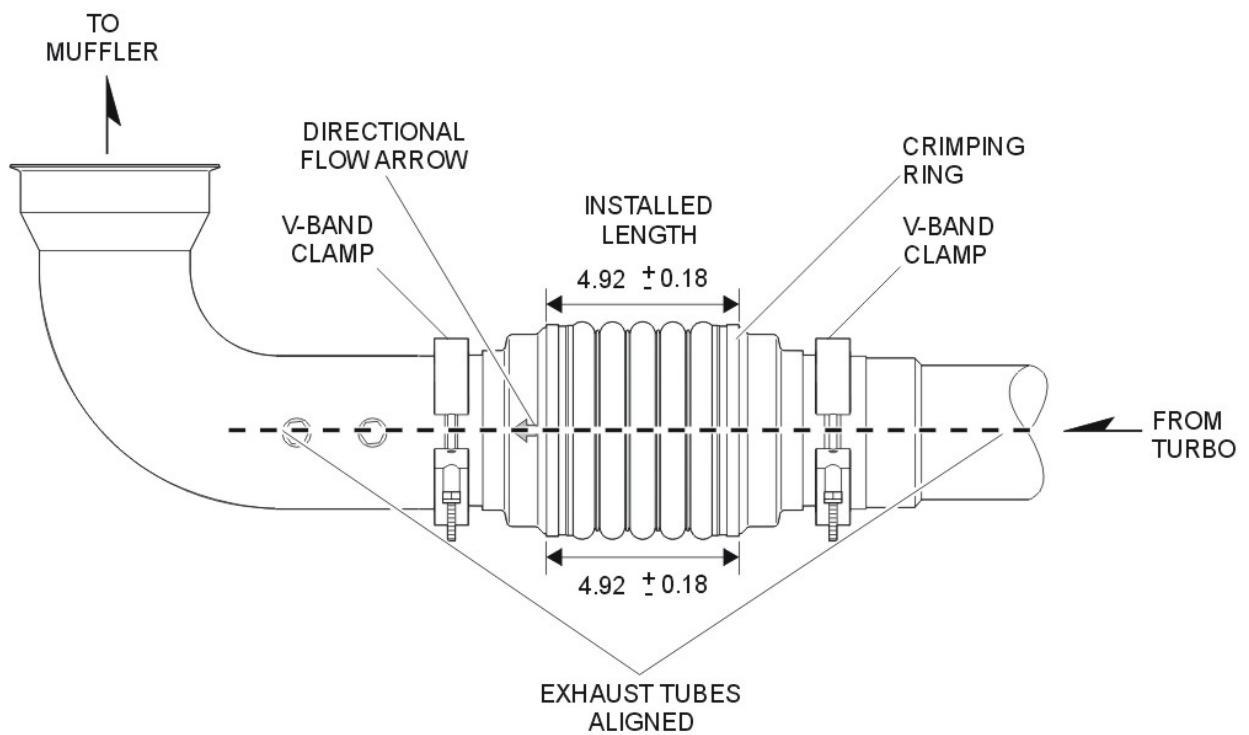
The following images show improperly installed flex connectors. Misalignment gives excessive strain on the flex connector during vehicle operation.



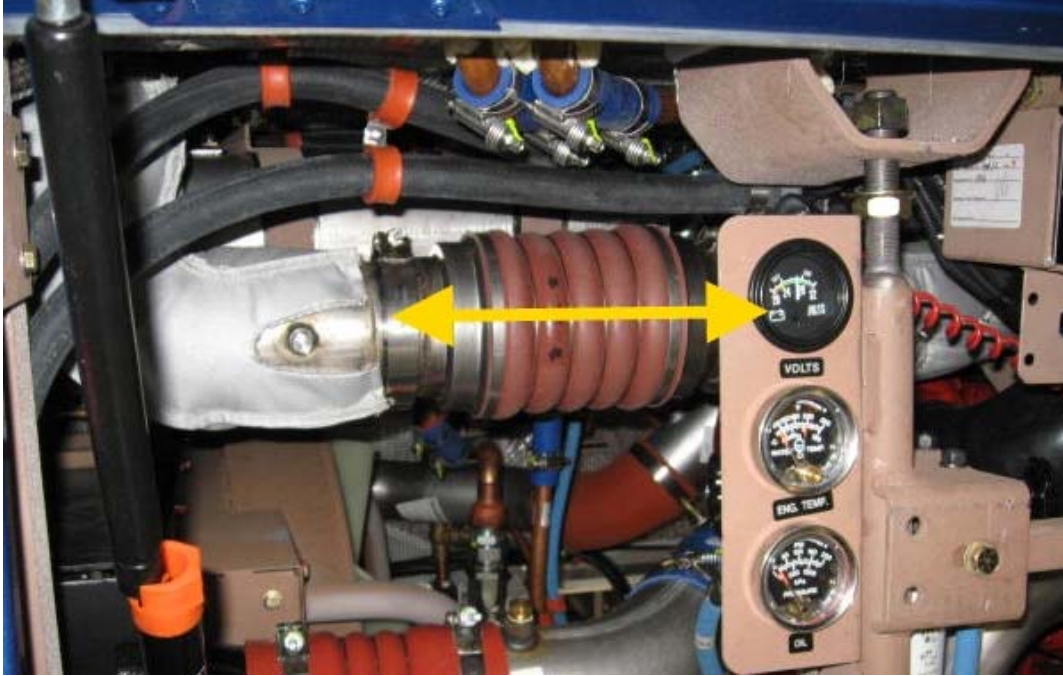
A correct installation will be straight. The bellows will be evenly spaced and not installed with torsion.



This is what a good installation should look like.

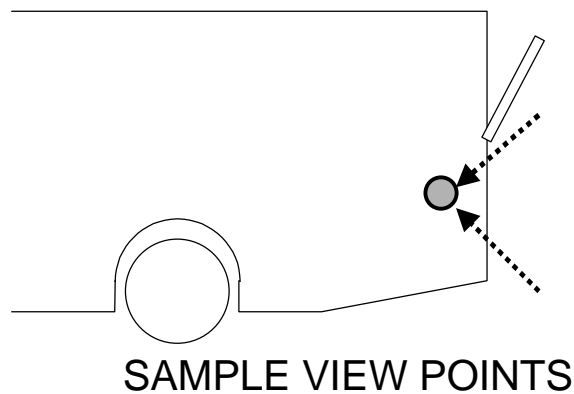


NOTE: Distance between crimping ring edges must be 4.92" +/- .18.
Adjust exhaust tubes to achieve this distance .



INSPECTING FOR MISALIGNMENT

You must inspect the flex connector from two different viewpoints. ***If the bend or offset is in the same plane as your eyes, you will not see it.*** Be sure the two viewpoints are approximately 90° different, such as viewing from above, and below, as shown in the following diagram.



Alignment Procedure Using Tool P/N 6360381

1. Turn the main battery disconnect switch to the “OFF” position.
2. Open the rear engine access door.
3. Ensure the following items are left loose prior to using the Flex Connector Tool for alignment:
 - a. Upper muffler clamp and 3x lower muffler bolts (Fig 1)
 - b. Muffler elbow V-Band clamp, Downpipe V-band, Downpipe U-Bolt and Turbo Elbow V-Band (Fig 2)

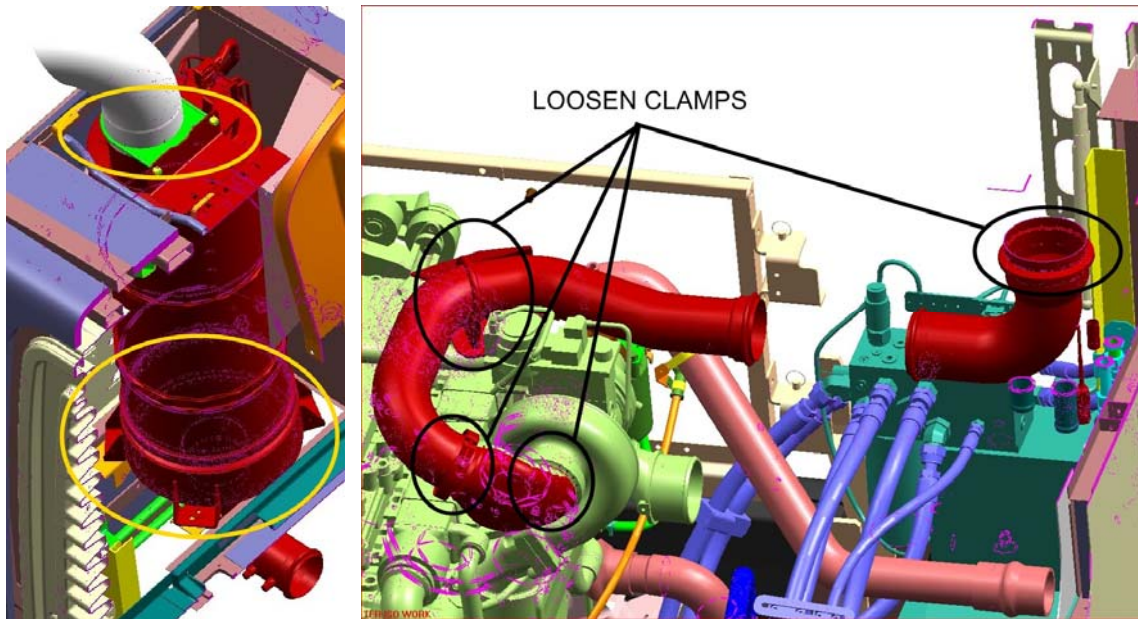


Fig. 1

4. Collapse alignment tool position in between the exhaust tubes.
5. Rotate both ends of the alignment tool until it locks into the expanded position (locating pin should be out of the slot and in contact with edge of the slotted end of the tool). Make sure that the flanged end of the exhaust tubes are properly seated to the tool. Install the V-band clamps. Adjust the exhaust tubes as required. See Fig. 2 below on the following page.

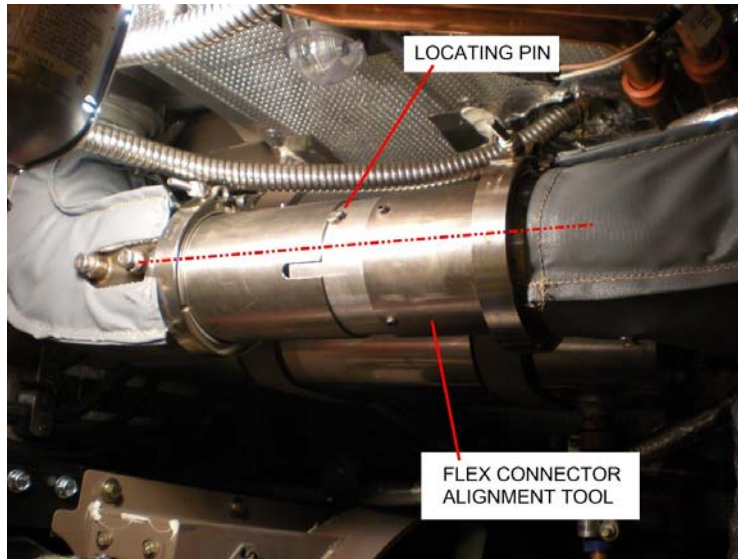


Fig. 2

☞ **NOTE:** Adjustment of muffler and/or exhaust tubes might be necessary to achieve proper alignment.

6. After verifying that the tubes and tool are all aligned. Tighten the V-band clamp on the turbo connection to **100 IN-LB**. Tighten U-clamp. Tighten V-band clamp on the muffler connection to **75 IN-LB**. Tighten bolts on the muffler if these were loosened.
7. Loosen V-band clamps on the tool and slide them out of the way. Collapse the tool by rotating both ends and slipping the pin to the slot. Remove the tool.
8. Inspect the condition of the flex connector and V-band clamps for wear and permanent deformation. Replace the flex connector P/N 284878 with a new one and use new V-band clamps as required.
9. Install the flex connector. Position it so that the directional arrow points towards the exhaust flow. Tighten V-band clamps P/N 205042 to **75 IN-LB**. Visually inspect the newly installed flex connector alignment.
10. Re-install exhaust blanket if removed.
11. Turn the main battery disconnect switch to the “ON” position.
12. Start the coach and check for exhaust leaks.
13. Close the rear engine access door.